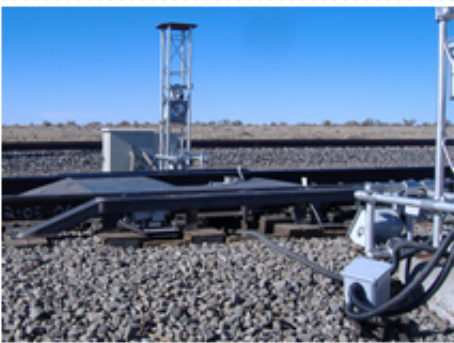

Products

Wayside condition monitoring systems



FactIS is a suite of wayside condition monitoring systems for railroads. FactIS modules can be installed as stand-alone systems, or they can be combined into a single, multi-module station. These systems are based on machine vision technology, which is able to capture clear images of vehicle components at normal operating speeds. The images are processed and analyzed automatically, and critical items are identified via e-mail notifications or SMS.

FactIS installations are unobtrusively housed in robust enclosures that sit below the



rail. They can be installed in a range of environments. If required, the systems can be located in remote locations, thus providing information to maintenance crews before the train arrives at the station.

FactIS modules can be stand-alone or integrated. Modules can be tailored to account for different equipment specifications and alarm regimes.

Note: FactIS is also marketed in Australia as ATEx

Lynxrail offers FactIS modules for the following (click on the links to create an email request for information):

- [Wheels](#) -- a comprehensive wheel management tool: hollowing, flange wear, rim thickness, back to back measurements, and other wheel parameters
- [Brakes](#) -- measures and trends pad thickness, missing pads, uneven wear, and other parameters
- [Vehicle survey system](#) -- reports on distances between wheel sets from side to side, angle of attack, and tracking
- [Springs](#) -- identifies broken and missing springs, and checks for uneven load distribution in a vehicle
- [Draft gear](#) -- looks at the geometry of the couplers to assess failing or failed draft gear
- [Open Door Detector](#) -- ensures that doors are securely locked to avoid product spillage

-
- [Thermal Scan](#) -- checks for applied brakes, overheating bearings

NOTE: The Wheel Skid and Hunting Detection systems can also be integrated into FactIS

[FactIS \(TM\) PP Presentation](#)